

LUKMAAN IAS

....Lead with Edge...

Do not write
in this space.

SPACE FOR TEACHER'S REMARKS

1. Understanding of questions:

2. Structure of answer:

3. Content of answer:

4. Presentation:

5. Any other remarks:

LUKMAAN IAS

....Lead with Edge....

Answer questions in NOT MORE than the word limit specified for each in the parenthesis. Content of the answer is more important than its length.

Do not
in this

Section A

1. (a) What are human nature and its role in guiding human conduct? How human nature of Indian people can be described?
- (i) It is due to human nature that India has peace and harmony in our society.
- (ii) Human nature of people is responsible for no or slow progress of our country in many aspects. (150 words) 10

Human nature can be defined as the pre-disposition or tendencies to act ~~in a~~ proper in a certain way.

For Eg: It is human nature to condemn violence in a civil society with laws & social capital. But It is also human nature to commit violence in order to defend himself or cause harm for personal interests.

Indian people & human nature

(i) ① Indian civilisation has practised egalitarianism & altruism for thousands of years. → The Indus Valley

LUKMAAN IAS

....Lead with Edge....

people were highly spiritual, the later people in vedic ages explored meaning of life & human moksha or liberation.

Do not write in this space.

Even after independence, we adopted fundamental rights as integral part of constitution with principle of "one man, one vote, one value"

(2) Human nature of Indians also has been influenced by violent experience of famines, poverty, & bondage during colonialism, which has made us peaceful.

(ii) Human nature is not wholly responsible for slow progress:

(1) Poor institutional set-up like lack of judges in courts, corruption,

LUKMAAN IAS

....Lead with Edge...

lack of protocol and too much discretion has led to slow progress.

(2) Lack of literacy & awareness is also a cause.

(3) Onslaught of neoliberalism has widened gap between 'haves' & 'have nots'

Hence, human nature is less so important but socio-economic & institutional factors more important.

LUKMAAN IAS

....Lead with Edge....

1.

(b) The idea of 'minimum government and maximum governance' has become a popular model of governance today. In the light of this statement, analyse the following questions with suitable illustrations and in the end explain how ethics can help in reconciling both views?

- i. It propagates the philosophy of Mahatma Gandhi-that people should govern themselves, that is, self governance.
- ii. This idea runs afoul to the fact that people cannot govern themselves, they must be governed. (150 words) 10

Do not write in this space.

'Minimum government & maximum governance' can be defined as a developmental philosophy focusing on less government interference, reasonable number of laws, no over-regulation & focus on citizen centric & responsive governance model.

↳ eg: single window mechanism to get all certificates - birth, death transfer etc. over e-technology.

(i) 'Self-governance' refers to a

'self-sustained', 'self-regulated'

& 'self-run' system.

→ Gandhi ji practically showcased

LUKMAAN IAS

...Lead with Edge...

Do not
in this s

this in his Khadi production, Ashram
living in Wardha, Sabarmati &
Tolstoy Farm.

→ It envisages people having
"Swaraj" at village level, which
leads to "su-raj" or good
governance.

→ Keen maximum governance,
with limited government is automatically
envisaged by Gandhiji & provided
for in 73rd & 74th Amendments.

MBM
to condition
to Panchayati
system as
provided
by Gandhiji & provided
for in 73rd & 74th Amendments.

(ii)

The idea is powerful & places
trust in ability of people to govern
themselves. This is apparent from:
① Villages like Ralegaon Siddhi
in Maharashtra which has full

LUKMAAN IAS

...Lead with Edge...

governance run by people with no state or centre help.

Do not write in this space.

② People's ability to govern is reason for provision of social audit in MNREGA. After all, social accountability lies in hands of people.

③ People feel an ethical duty towards society due to the tradition of 'dharma', righteousness in our society.

However, these also suffer problems:

- ① Rule of law flouted in 'mob attacks'
- ② Social institutions by like klapp mentality Panchayats don't allow for good governance.

Reason
of the

②

LUKMAAN IAS

....Lead with Edge...

2. (a) Since there are law, rules, regulations, ethics and conscience to guide public servants conducts, most of the time they may face moral dilemma. In this context consider the following questions:
- i. In such situation one should give preference to law and rule over conscience as the latter is difficult to establish objectively.
 - ii. Explain with any specific example which has conflict between them that how you will overcome such moral dilemma?

(150 words) 10

Do not
in this

LUKMAAN IAS
....Lead with Edge....

Write
here.

2. (b) Socialisation can be considered as the ethical eco-system for a child which shapes his/her future character and conduct.
- i. Discuss how socialisation has undergone changes in 21st century from that of 20th century?
 - ii. There is a view that traditional values have eroded. Discuss how it has posed challenges in values inculcation to social institutions such as family and parents? (150 words) 10

Do not write
in this space.



LUKMAAN IAS

...Lead with Edge...

Do not write
in this space.

3.

Given are two quotations of moral thinker/philosophers. For each of these, bring out what it means to you in the present context:

- (a) "It is easy to hate and it is difficult to love. This is how the whole scheme of things works. All good things are difficult to achieve; and bad things are very easy to get." (150 words) 10

And explain question
"Bad things" are easy to achieve because they involve short-cuts. For example, hatred is a result of self-obsession, lack of humility & mutual respect & over emphasis on own ego. A person can forget all these values in a jiffy & chose to do the "bad thing", i.e. hate.

For eg: Hitler used "bad speeches" full of hatred to incite quick violence against jews, & rise to power on wave of blind nationalism.

Similarly: ^{Some} Students cheat in exams to avoid hard work. This "bad thing" is easy to get as it

LUKMAAN IAS

...Lead with Edge...

does not require burning midnight oil & challenging our mind.

Do not write in this space.

'Good Things' are hard to achieve because they need time, nurturing, patience, compassion, trust & honesty as key values.

for eg: Tata Sons, a name that globe trusts as a responsible organisation took years to cultivate ↳ their endears/CSR efforts & concern for community was 'a good thing' build over decades.

↳ However, this fragile work was shattered by an incident of sudden firing of CEO & questions about their corporate/governance ethics.

LUKMAAN IAS

...Lead with Edge...

Hence, 'good things' are hard to
nurture & take time.

Do not write
in this space.

write
10

LUKMAAN IAS

....Lead with Edge....

3. (b) "The world is a dangerous place to live; not because of the people who are evil, but because of the people who don't do anything about it" (150 words) 10

Do not write in this space.

First explain quote
Inaction & apathy by capable

men is biggest danger to upholding morality & ethical values.

'Evil acts' can be checked in time by appropriate action by civil servants, society at large, and institutions as well.

For eg! Death of people in accidents while bystanders watch helplessly & fail to act due to fear of prosecution only creates apathy & inaction.

↳ 'Evil doers', i.e., those who committed accident get a chance to flee due to this.

Institutional mechanism such as "GOOD SAMARTIAN" rules

LUKMAAN IAS

....Lead with Edge....

Do not write
in this space.

by Supreme Court to protect who save lives in accidents are positive creators of change in society.

↳ These mechanisms enable people to act resolutely against evil.

~~Even such acts are mentioned in our epics such as Mahabharata where the inability of courtiers watching~~

~~Also, there is tendency in society to not act against regressive proclamations by Khas Panchayats or against bribery taking by police in open public spaces~~

→ When people act collectively & individually, gender violence, environmental degradation & deprivation of rights to people can be addressed.

(K)

LUKMAAN IAS

....Lead with Edge....

4.

(a) Should society adhere to its tradition and culture or it should accept change? In this context consider the following questions:
(200 words) 10

- i. Tradition and culture give identity to society and hence, it should not be changed.
 - ii. Change is inevitable, it is only unchanging reality.
- In the end, discuss how ethics can help in bringing clarity on the above issue.



Do not write
in this space.

LUKMAAN IAS

....Lead with Edge....

4. (b) Discuss the following questions based on role and responsibility of an ethical public administrator.
- i. He/she must pay attention to both, immoral means to attain moral ends; and moral means to attain moral ends.
 - ii. He/she must prefer policy impartiality over ethical neutrality.
- (150 words) 10

Do not write
in this space



LUKMAAN IAS

...Lead with Edge...

write
ce.

5.

There is a view that in the last three decades governments have given too many rights to citizens such as in terms of local bodies, Citizen's charter, RTI, RTE, whistle-blowing law, rights getting expansion due to innovative interpretation by judiciary, etc. In the light of this statement, answer the following questions.

Do not write
in this space.

- i. They have strengthened democracy at the cost of governance.
- ii. They have strengthened both governance and democracy but at the cost of economic growth. (150 words) 10

(i) Strengthened democracy at cost of governance: why not so!

① Strengthened democracy by promoting transparency, accountability, citizen-participation & responsive governance.
↳ Both vibrant democracy & good governance are inter-related. one complements the other.

② Democracy is about rule of law & good governance promotes that.

Why so: [Strengthened democracy but at cost of governance];

↳ Public officials are laden with burden of replying to RTI etc.

improve
quality of govt

LUKMAAN IAS

...Lead with Edge...

Do not write
in this space.

and don't get time to govern.

(a) Over-litigation via PILs is encouraged leading to courts

(vii)

staying governance measures

eg: ~~Stopping of work on~~ ^{Stopping of}

~~work on~~ ^{RTIs} due to NGO RTIs

leading to legal challenges.

ii

LUKMAAN IAS

...Lead with Edge...

6.

Discuss the reasons why public servants are expected for more discipline in their conduct than others and hence there are code of conduct and code of ethics for them? Is a public servant only a public servant during office hours or ethical norms should be practiced outside office hours also? Explain.

(150 words) 10

Public Servants such as IAS, IPS, IRS and many other officials are expected hold higher standards of moral & ethical conduct due to nature of their work.

① They are expected to deliver public services to poor, needy & disadvantaged groups with objectivity, transparency & full accountability.

② They serve as role models & torch bearers of our civil welfare society as envisaged by Preamble & Directive Principles of constitution.

③ They are required to deliver 'duty' without bias & conflict of interest as per 'deontological' approach in ethical governance.

④ They are expected to fulfill 'rights' of people as per different

Do not write in this space.

LUKMAAN IAS

...Lead with Edge...

provisions of MGNREGA, Right to work, RTI Act, which are executed/implemented

Do not write in this space.

by them.

⑤ They are real changemakers & have a patriotic duty to do so. Also, the taxpayer pays their salaries to do so.

eg: A corrupt IAS officer ^{ignoring} siphoning off funds for mid-day meal ^{by junior} is acting with dishonesty & acting without dishonesty. Such behaviour is unacceptable in public life.

Public servant has a 24x7 job where he/she has to be available ^{mentally,} ~~in~~ ethically, physically & morally.

↳ Ethics cuts across all spheres of life. For eg: A civil servant beating wife at home may not address problem of domestic violence.

LUKMAAN IAS

...Lead with Edge...

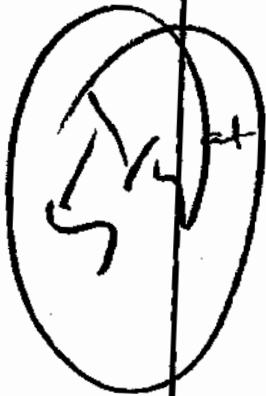
in district.

↳ Ethics is universal & transient in nature. It cannot be applied in silos.

↳ As Gandhiji said, "consistency of thought, perception, belief & action as key to ethical behaviour."

→ Such consistency is needed at all levels by civil servants.

Do not write in this space.



LUKMAAN IAS

....Lead with Edge....

7.

What is meant by bureaucratic work culture and how it is different from professional work culture? Discuss the factors responsible for their distinctive characteristics. Do you think that a fully professionalised bureaucracy will not suit to Indian conditions? Give justification to your view. (150 words) 10

Do not write in this space.

Bureaucratic work culture refers to the work culture practised in highly hierarchical & formal workplace

Such as government offices.

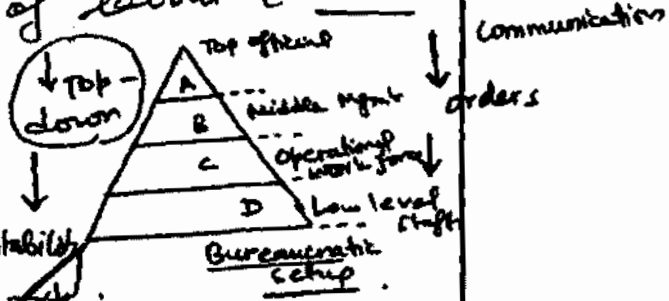
Factors/Features:

- ① Rules, procedures & policies follow chain of command.
- ② Seniority /juniority key to work relationships.

- ③ Rigid organisational structure & high division of labour (work specialisation)

- ④ Need for high control & accountability due to sensitive work.

- ⑤ Top-down approach with autocratic attitude from the top.



LUKMAAN IAS

...Lead with Edge...

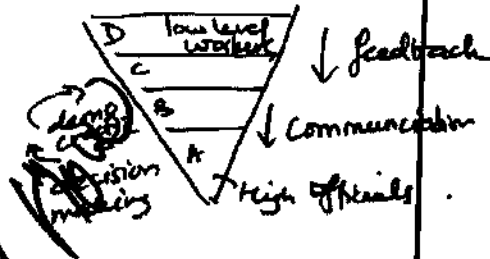
Professional work culture vs. Bureaucratic

Do not write
in this space.

① Professional work culture is more democratic & approach, & views organisation as 'bottom-up'

eg: Google practice

Such work culture



② Performance review focused promotions vs. age-based.

③ Ethical behaviour is organic part of culture & transparency, accountability etc. are unspoken but automatically enforced.

↳ A more focus on team work as compared to bureaucratic culture.

LUKMAAN IAS

....Lead with Edge....

Indian conditions & professional bureaucracy

Do not write
in this space.

① Suits Indian conditions due to the nature of Indians to be 'participative', 'vocal' & 'democratic' as noted by 'Argumentative Indian' book of Amartya Sen.

② Historic culture of local governance (Panchayats) → democratically & professionally run.

③ Impact of modernisation & managerial practices from the west has been successful in India.

④ eg: Infosys, TCS etc are run like western companies with core Indian values of fairness, justice & participative workforce.

LUKMAAN IAS

....Lead with Edge....

8.

All nations give first priority to their citizens for example they are given some constitutional rights which are not enjoyed by people of other countries. Doesn't it show giving preference to citizen over human? Is it ethically justifiable to divide people on the basis of citizenship, that is, territorial sovereignty? Illustrate and explain.

(150 words) 10

Do not write
in this space.

Citizenship is a key foundation of national consciousness, patriotism, cultural & social identity & legal rights.

Problems with Rights for citizens over 'human' :

- ① As proposed by Rabindranath Tagore, goes against values of internationalism & cosmopolitan outlook.
- ② Does not do justice to the concept of "Vasudev Kutumbakam" — 'world is our family'
- ③ Leads to violence, killings & violation of rights to life (As per UN Human Charter) when acts

LUKMAAN IAS

....Lead with Edge....

like AFSPA (Armed Forces Special Powers Act) get enacted in 'disturbed areas'

Do not write in this space.

- ④ Against virtue of 'humanity' & civil duty or 'dharma' towards ~~pacifism~~ & egalitarianism as provided in the Constitution.
- ⑤ Treats humans as 'Means' & not as an 'End'.

Need : "why ethically justified :

① Ethics calls for protection of rights such life, liberty, equality etc.

② Ethics calls for 'deontological' approach that its duty of a state to protect its citizens / no matter what.

LUKMAAN IAS

...Lead with Edge...

eg: Use of 'War on Terror' doctrine & Patriot Act in USA to wage war in middle-east & also create State-surveillance.

→ Clearly, the issue has ideological & practical implications.

The end should be to achieve 'human' rights & not merely

'Citizen', but in light of realpolitik

the state must involve itself in reasonable way to protect

Citizens.

Do not write
in this space.

(5)

LUKMAAN IAS

....Lead with Edge....

write
ie.

Section B

9. Due to increase in the incidents of stalking, kidnapping and rape in moving vehicle, life of women has become unsafe in one such city. There have been reports of two murders both are related to stalking. In both cases, women were married and had children as well. In both cases, police have been informed and formal complaints were filed but still the menace was not addressed. Interestingly, in one such case when complained was filed by the woman, the constable himself became stalker.

These incidents have found wide coverage in the media which has further abetted fearfulness and lack of safety to women. It is also a setback to the city police which has in past special drives for creating awareness on women safety and has taken many measures including community policing.

- a) Suppose you are the Deputy Police Commissioner in the city then what more specific measures will be taken to tackle the menace of stalking and other issues?
- b) Discuss the behavioural problems of the police in this case and whether disciplinary action as transfer is sufficient or there in need for upholding police accountability if it is, so how? (250 words) 20

Do not write
in this space.

The issues at stake here are

safety of women from crime, rape etc.
as duty of state & women's rights
to life & liberty (Article 21 of Constitution).

→ Issue also raises question on
professionalism, training, effectiveness
& citizen-centric-ness of police towards
citizens & women.

values of moral conduct towards
women, upholding Rule of law, punishing
the perpetrators of heinous crime & showing
emphatic but effective approach. ^{As} The

LUKMAAN IAS

....Lead with Edge...

Deputy Commissioner, my action & decision on matter ~~must be~~ ^{must be} driven urgency & upholding social fabric of the community at large, women in particular.

Do not write in this space.

① Specific measures:

① Set-up a Hot line for women to address any suspicious cases or incidents. Increase police-checking in 'dark areas'

(Where crime is committed often)

② Set-up a Rapid-action force for swift action, investigation & arrest of perpetrators of stalking.

③ Review the IT Act & take action in regards to e-reporting of social media activity of cyber stalking, cyber bullying etc.

④ Launch a website, in consonance with state/central laws to list sexual-violence perpetrators

LUKMAAN IAS
...Lead with Edge...

offenders to warn public.

↳ This must be reviewed to ensure policy rights of concerned people are not violated.

⑤ organize workshop to create awareness about the issue & enable psychological counselling for any potential stalkers.

⑥ organize self- defence classes for women.

⑥ The behavioural problem here of the unprofessional constable turned stalker has many reasons:

- ① lack of gender sensitive training
- ② potential psychological imbalance which can be addressed by counselling.
- ③ poor attitude towards women due to entrenched male

Do not write in this space.

LUKMAAN IAS

...Lead with Edge...

Do not write
in this space.

dominance & patriarchy.

④ Lack of police to check such behaviour due to over-looking of past actions may also be the reason.

⑤ Feeling of police that they are not bound by laws due to power given to them

Transfer is not enough because

① It does not address the psychological, attitudinal & ethical dimensions of constable's behaviour.

↳ It is a knee-jerk step & constable may further commit same act elsewhere.

↳ Against ethos of code of conduct of police.

9 1/2

LUKMAAN IAS

...Lead with Edge...

Greater accountability mechanism is needed by undertaking Full review & committee investigation of this event.

→ This will help to bring the Challenges of making police more 'sensitive' to public needs to light.

→ It will also ensure that such actions are caught before being committed.

Hence, a long-term approach to handle this issue would be to suspend the person & conduct a full review. The appropriate steps as described above can be taken based on report.

Do not write
in this space.

LUKMAAN IAS

....Lead with Edge....

10.

There is a report of racism at one such international airport of the country. Miss A has alleged that the immigration officer 'humiliated' her by repeatedly asking questions about her nationality. The officer looked at her passport and told you didn't look like an Indian. The officer also asked her other inappropriate questions like number of states in the country and the number of states bordering her state.

Although she has not filed a formal complaint but the incident has gone viral on social media. There have been reactions also from all quarters including government of India. It is very shameful for the country that people belonging to a particular region are still doubted on their nationality.

Suppose you are the head of the immigration department of the airport then

- a) Give your reaction to the above incident.
- b) Evaluate the following options and choose the most appropriate one, giving reasons
- No any courses of action will be taken as it is one-off incident.
 - Only warning should be issued to the officer that he should not repeat in future.
 - First allegation should be established and Miss A should be persuaded to file a formal complaint to proceed for disciplinary action against the officer.
 - Warning should be issued to the officer and a sensitisation programme should be initiated in the department about for appropriate conduct.

(250 words) 20

②

The critical issues involved in above case are lack of awareness among immigration staff about India's diverse ethnic profile. It raises questions on their training, & above all lack of sensitivity towards other human beings.

Do not write in this space.

LUKMAAN IAS

...Lead with Edge...

write
re.

Do not write
in this space.

It brings in focus our constitutional duty of promoting brotherhood & fraternity & avoiding questions that are harsh & inappropriate in such situations.

↳ Values such as fairness, justice, & awareness of one's country, professionalism & sensitivity are raised.

↳ The incident also brings to forefront lack of education about far-off states like North-East etc. in schools.

↳ Books issued by government are devoid of cultural history & ethnic diversity of such regions that are integral to the country.

↳ These type of issues have a tendency to reflect on our society's lack of acceptance of our own people
↳ Just due to appearance & different

LUKMAAN IAS

....Lead with Edge....

Do not write
in this space.

culture, we tend to ~~exclude~~ the people from our concept of 'nation'.

(b)

My evaluation of options will be driven by need to develop Sensitivity, knowledge, awareness & appreciation for our cultural variety & diversity.

→ (i) This is not an appropriate action as ignoring it as 'one-off' issue will hurt patriotic sentiments of a whole community.

↳ It will also be a 'status-quoist' approach & against the 'rights' of equality of constitution.

→ (ii) A warning is a short-term, action with no longer-term solution.

LUKMAAN IAS

....Lead with Edge....

& does not address the core problem of lack of knowledge & sensitivity.

As per deontological approach, the officer has a duty to perform his job with full appreciation of the repercussions his actions have on morale of people.

↳ Hence, not just warning but further steps are needed.

→ (iii)

A legal approach of filing a complaint may put MC A & the community at ease & pacify anger.

However, it will endanger motivation of thousands of officials & the accused. These officials have attitudes & sensitivity problems such this partly due to lack of training, lack

Do not write in this space.

LUKMAAN IAS

....Lead with Edge....

Do not write in this space.

of awareness, lack of measures to prevent them from stereotyping others due to nature of their job.

↳ They may believe that they are fulfilling their duty & job of ensuring borders of our country are safe.

↳ Hence, conciliation between Miss. A & officer is required along with a training & awareness program for whole staff.

(ii)
10

This is the most desirable option as it ensures that concerns of all parties are addressed & future incidents are avoided.
↳ Stereotyping is replaced by sensitive, unbiased & objective evaluation by immigration officers.

LUKMAAN IAS

...Lead with Edge...

11. Recently, a metropolitan city which is also the NCT of the country is experiencing extreme air pollution due to which it has been unofficially declared as 'environmental emergency'. The city appears to be like a gas chamber.

Do not write in this space.

The immediate causes are burning of crops stubbles in vicinity states and fire crackers on the festive occasion. The other factors are related with city lifestyle wherein most of the human polluting activities remain largely unregulated. Other cities in the country which are close to the vicinity states have also started facing air pollution problems.

The emergency like situation has resulted into respiratory related problems such heart and asthma and children are being considered as the most vulnerable. One death has also been reported.

Suppose you are the head of the pollution department of the city then

- Is it failure of environmental governance or a human failure? Analyse the factors responsible for failure of regulation of human activities in the city.
- What should be the immediate steps taken to tackle the emergency?
- Discuss the medium and long term steps so that the city air pollution is contained at acceptable. (250 words) 20

The issue raises question about our 'Right to life' as per Article 21 that includes right to a clean environment as per Supreme Court.

It also is about environmental ethics, on how humans interact, & act in terms of wastage dumping, use of fossil fuels & pollution, & a more compassionate view of our surroundings. Values of 'Ecological conservation', 'self-regulation', 'Carbon footprint' & even

LUKMAAN IAS

....Lead with Edge....

moral view (anthropocentric) of nature.
are ~~not~~ to be addressed.

Do not write
in this space.

(a) This is both a governance failure
as well as human failure:

Governance failure:

(1) Inability of government to check
burning of grass / crop stubbles in
neighbouring states → poor coordination
& lack of civil service values across
administration.

(2) Inability of government to address
limited bans on firecrackers as
well as imposition of sin-tax on them
to decrease burning.

(3) Government hasn't reached out to
civil society to draw up a local
and national policy on handling
such emergencies.

LUKMAAN IAS

...Lead with Edge...

Human failure:

① Disregard for health of neighbouring states' people by farmers burning crops despite knowledge → lack of empathy, concern & feeling of brotherhood as envisaged in constitution.

② Lack of 'self-regulation' among citizens who could avoid this by switching to eco-friendly ways.

↳ People practicing 'ethical egoism' of deriving high pleasure & ignoring ill-effects on others.

↳ People could stop driving diesel cars, use public transport & refrain from firecrackers in larger public & national interest.

③ Institutional failure as despite Supreme Court & NGT directions, illegal construction, old ^{polluting} trucks etc. have

Do not write in this space.

LUKMAAN IAS

....Lead with Edge....

Do not write
in this space.

not been phased out.

(b) Steps (immediate):

① Issue free masks to all children, older people, & disadvantaged sections, workers in construction sector etc.

② Stock public health centres (PHCs) with asthma medicine & medicine related to pollution free of cost to common people.

③ Immediate start of odd-even policy within a few days & discount of public transportation such as metro.

④ Heavy fines on old vehicles & impounding of vehicles breaking NGT rules at war-footing.

⑤ Set-up a Special health

write

LUKMAAN IAS

....Lead with Edge....

Committee to issue health advisories notice on all channels; radio etc.

Do not write in this space.

- ⑥ Close schools & colleges for a few days.
- ⑦ Seek technological gadgets such as air filters for offices, buses etc. & get them installed.

⑧ Medium & Long-term:

These should focus on remediation, rejuvenation and repression of environmental concerns.

① A National Air Pollution Policy that deals with such incidents as disasters & not mere events.

↳ Appoint top environmental experts and enforcement agencies & civil society members.

② Set-up a pollution control cell to execute SANGT orders

12

LUKMAAN IAS

....Lead with Edge....

12.

A wrestler who has participated at international and national events gets his birth to represent India in the upcoming Olympic through a court battle replacing the sportsperson who won a medal in the last Olympic.

When few days are left in the event, there are reports of doping against him. He alleges for foul practices by some people in his foods. Initial investigation also happens from this angle. He is being portrayed as clean.

The Indian anti-doping agency also clears his name which is challenged in the world anti-doping agency. This agency rule against the wrestler and consequently, he loses chance to participate in the Olympic. At this stage, India loses chance to replace him in the category he could have participated. Most importantly, image of the country has suffered.

Suppose you were the concerned authority to take a final decision on his participation and replacement at early stage when the controversy first surfaced then

- Discuss the courses of action that you could have followed and give reasons in justification.
- What steps should be taken by the sports authorities in the country to avoid such embarrassment at national and international level.
- To what extent adoption of a code of sports ethics at national level will help in this regard?

(250 words) 20

The issue involved here is that of protecting national image while ensuring that hardwork, passion & dedication of sportsperson is preserved.

The values of justice, fairness, non-partisanship, unbiasedness, & honesty & integrity are at stake.

My Decision will be guided by legal provisions in place, ensuring

Do not write in this space.

LUKMAAN IAS

....Lead with Edge....

motivation of the Sports persons is not affected adversely, & that a fair investigation is undertaken to get justice for concerned stakeholders.

Do not write in this space.

Course of Action

9

- ① Set up an investigative agency comprising of drug-specialists to conduct immediate review.
→ This will objectively & scientifically address doping & also such results can be transmitted to International agency.
- ② Set up team to investigate the charge of fraud practice
↳ Investigate the food servers, use CCTV etc.
↳ Expose the wrong-doers if involved.
- ③ Send an emergency request to World doping agency to consider the

LUKMAAN IAS

....Lead with Edge....

case on urgent basis & allow replacement of athlete if needed.

↳ Use diplomatic channels.

↳ This will salvage national image & show professionalism on our part.

Do not write in this space.

(b)

Steps by Sports Authorities

- ① Devise a National Sports Drug Policy which lays down all guidelines.
- ② Training of all coaches.
- ③ Awareness & training of athletes with regard to doping.
↳ A national center for R&D on latest doping mechanisms etc.
- ④ Set-up ad-hoc branch of

LUKMAAN IAS

...Lead with Edge...

Do not write
in this space.

International doping agency.

⑤ Code of conduct & Ethics for sports persons.

⑥ A clear monitoring mechanism of food & intake of national athletes.

⑦ Code of ethics is a document that clearly outlays standards of what is right & wrong. It imposes a 'moral obligation' on relevant persons to act ethically.

① A National Sports Ethics code will standardize the rules, guidelines & direct appropriate behaviour of athletes.

② Put Indian sports on par with International practices from an ethical point.

LUKMAAN IAS

...Lead with Edge...

② enable us to view ^{not} sports performance not just an 'end' but also as a 'means' of developing culture of camaraderie, leadership & ethical uprightness.

Do not write
in this space.

10

④ basic level of sports performance & India's soft power in the long-run.

LUKMAAN IAS

....Lead with Edge....

13.

There is a historical city in one of the districts of UP. Recently, it has been in news due to controversy on a report by a person of the city that there has been exodus of people only belonging to majority community although they are in minority in the city.

The controversy is on the claim that the migration is only due to fear of the dominant community in the city and not due to other reasons such as search for better life, employment, safety and security due to gangsters menace and law and order problems. This has also been corroborated by a report on the issue by the NHRC, which has also become controversial.

Interestingly, the city has always had communal harmony. It has seen no trace of communal tension even at a time when parts of UP witnessed a lot of violence and communal hatred during 2013.

- Suppose you are the District Magistrate of that district then what should be your immediate priorities and why?
- Discuss the role and significance of various stakeholders you will seek help and why?
- Discuss your courses of actions which will be able to not only provide short term solution but also be long lasting in establishing rule of law and peace and harmony in the city. (250 words) 25

This is issue concerning the spread of communalism, hate & rumor mongering by perverse elements of society, & that of maintaining safety, peace, law & order.
Also, deep-seated communal attitudes & religion as tool of division need to be studied & addressed here.

Do not write in this space.

LUKMAAN IAS

...Lead with Edge...

My decision as DM will be driven by ensuring people's safety, investigation into the realities of matter & also restoring harmony.

Do not write in this space.

① Immediate Priorities:

- ① Enhance security forces in areas with sensitive situation to stop violence from occurring.
- ② Swiftly crack-down on rumour mongering by using provisions of IT Act ^{to} catch such perpetrators.
local social media, whatsapp etc.
↳ Use local intelligence to arrest ^{potential} communal-violence perpetrators & menaces in society.
- ③ Call for a meeting with religious leaders of both sides & arrange

LUKMAAN IAS

...Lead with Edge...

For a joint public ^{media} release for maintaining peace & respect for others' feelings. Do not write in this space.

(4) Request media houses to avoid playing disturbing news or rumours & follow ethical reporting.

These actions will ensure that immediate fears & rumours are put to rest, peace is restored for short-term atleast, & consensus is built to handle the problem.

(b) Stakeholders to approach & why:

(1) Religious leaders of both sections as they have large sway over people's actions & their alliance could nip the problem in the bud.

(2) Higher authorities to seek advice on course of action, violence-containment measures etc.

LUKMAAN IAS

...Lead with Edge...

③ Send a official request to NHRC for details on report to ensure that all possibilities & facts are covered.

④ leaders of majority community that is migrating to request further migration in interest of maintaining peace in the region.

↳ Address their employment, law & order concerns via administrative channels.

Course of Action

An administrative, humanitarian, legal and secular approach is needed to address this problem.

I will deploy administrative capabilities - police, intelligence, rehabilitation

Do not write in this space.

LUKMAAN IAS

....Lead with Edge....

for displaced etc.

I will also ensure that all leaders (religious) & influential community members make moral appeal for peace & harmony.

Administration must act without bias & in non-partisan spirit.

This will ensure that communal incidences donot become common & easily invoked to meet political ends. The administration can play a proactive role in ensuring that people are protected & undue harm is not caused to society.

Do not write in this space.

10/5

LUKMAAN IAS

...Lead with Edge...

14.

Government has officially decided to construct a nuclear power plant in one district of a state. All the clearances have been done such as design, disaster profiling of the area, population which will be relocated, etc., and the location has been found very ideal for the plant.

Since the location is in remote area which is sparsely populated, there are over 2000 population which are going to be affected in relocation. The locality has children, youths, adult men and women, aged, farmers, local traders and businessmen. They have been living happily in that remote area and with their collective efforts; largely the village has been self reliant.

They are not against the plant or any developmental project but they also don't want disruption in their lifestyle, social harmony, belongingness and emotional attachment, recreation, business, and farming, which they have narrated to you on your visit to the area. Some of them have even threatened that if this happen, they will commit suicide.

Suppose you are a government officer and has been given with adequate power the task to successfully relocate them, then

- What will be your order of priority to the above stakeholders while exploring various options and why?
- What are the various options available to you?
- Evaluate them and choose the most appropriate one, giving reasons.

The issue is that of ^{(250 words) 25} development in overall national interest (nuclear power plant) vs. interests of small, self-sustaining societies & communities & their cultural rights & right to life as protected by constitution. (Articles 21 and 25).

Values of unbiasedness, fairness, justice, & addressing all concerns of the affected people have to be taken care of.

Do not write in this space.

LUKMAAN IAS

...Lead with Edge...

Decision regarding priority will be guided by level of vulnerability & susceptibility of group/stakeholder, the level of ^{help &} need they require monetarily, & resource-wise, as well as the feasibility regarding time & administrative constraints.

Do not write in this space.

④

Order of Priority :

- ① Children & Women → children have complete dependence on mothers & women are most exposed to relocation problems → hence they will be prioritized.
- ② Aged → They must be highly emotionally attached & most ^{driven} ~~inclined~~ to commit suicide. ^{due to psychological stress} → address them to avoid such acts.
- ③ Farmers → allocating them land for continuing farming is key to help them resettle & relocate

LUKMAAN IAS

...Lead with Edge...

Do not write
in this space.

Successfully. → Addressing this before
traders & young men warrants more
social security net for most
susceptible to economic loss.

④ Business men / Traders →
~ needed to start economy in resettle
Area.

⑤ Youth → can be tapped in for
construction work of plant by providing
skill training & employment.

↳ This will ease their
transition.

OPTIONS

① Pass an order ^{of detention for} ~~against~~ those
threatening suicide to protect
life (also against law)

② Set up a consultative committee
^(leaders)
comprising of villagers to document
concerns & chart a solution democratically.

LUKMAAN IAS

...Lead with Edge...

③ Present democratic solutions to villagers & get GRAM SABHA to approve them as per a transparent & accountable process.

Do not write in this space.

④ Evaluation

① Option ④ is in interest of protecting life but could lead to further worsening of morale of villagers
↳ psychological
↳ counselling for families is need of the hour to stop them from taking extreme steps.
↳ Hence, this option must be avoided.

② The committee will ensure that all concerns are recorded & a higher compensation (if need be) is released.

→ It will also help in identifying the most vulnerable

LUKMAAN IAS

....Lead with Edge....

groups & protect them from any extreme actions (suicide).

→ Necessary concerns can be raised to higher authorities/seniors to seek advice.

③ This ensures that the GRAM SABHA is able to participate & build consensus. Concerns of all stakeholders would be addressed & an impartial & bottom-up solution can be achieved.

I will pursue option ③ along with ② to ensure a fully effective outcome.

Also, my duty is to ensure justice is served to these communities & their 'gates' are

Do not write in this space.

LUKMAAN IAS

...Lead with Edge...

decided not by whims & fancies
of bureaucratic functioning but by
an inclusive approach where the
district administration works with
Gram SABHA to address all
concerns.

Do not write
in this space.

12

